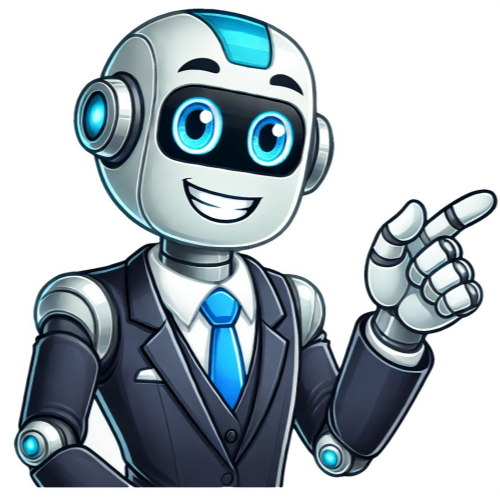


Continue









**Phonak hearing aid manual bluetooth**

To connect your Nathos Nova hearing aids to a Bluetooth device, ensure that Bluetooth is enabled on both the device and the hearing aid. Restart both devices by turning off and then back on again. This will give you three minutes to pair them successfully. Once paired, they will automatically reconnect when turned on in the future. When using paired hearing aids with a phone, users can receive calls directly through their hearing aids. The caller's voice is heard clearly in real-time, while the wearer's own voice is picked up by the device's microphones. Users can manage calls via either the phone or the hearing aids themselves. For any technical issues or troubleshooting concerns, refer to the Support Pages for FAQs, how-to videos, and user guides. If problems persist, contact the Technical Support Team through the provided link. However, they cannot assist with internal setting adjustments, fitting-specific questions, damaged products, or pricing inquiries. Instead, consult a Hearing Care Professional (HCP) for personalized recommendations based on individual hearing loss needs.